

ENERSPACE

MODULAR GROUP

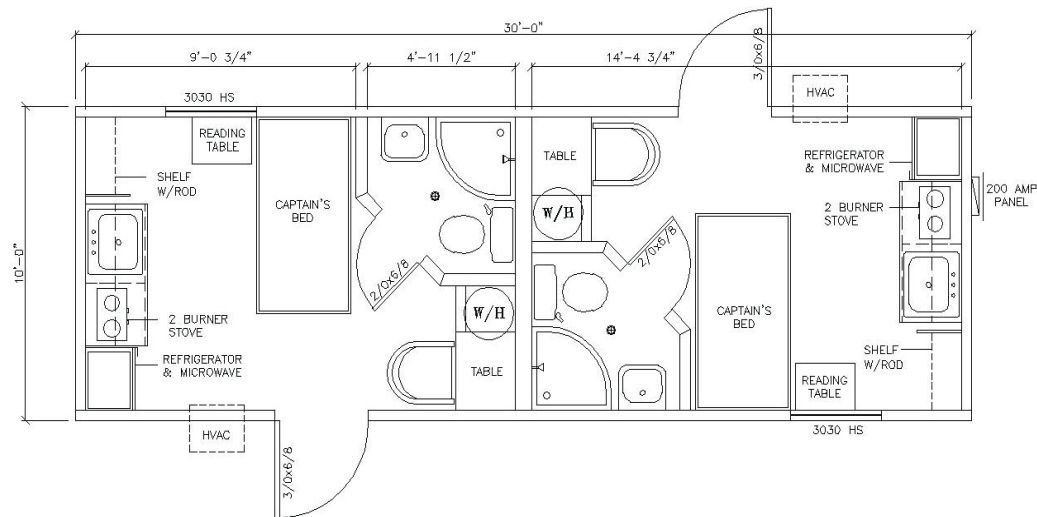
CONTACT

MATT KRAMER

PH. (281) 814-3337

E-MAIL: MCKRAMER@ENERSPACEMODULAR.COM

PARK MODEL UNIT



STANDARD FEATURES

- HI RIB OR .019 ALUMINUM SIDING
- FULLY FURNISHED
- INDIVIDUAL HEATING/COOLING FOR EACH ROOM
- CAPTAINS BEDS INCLUDE UNDER BED LOCKABLE STORAGE
- FULL HEIGHT PARTITION WALLS HAVE SOUND PROOF INSULATION
- SUSPENDED GRID CEILING
- STANDARD OUTRIGGER FRAME

ENERSPACE

MODULAR GROUP

CONTACT

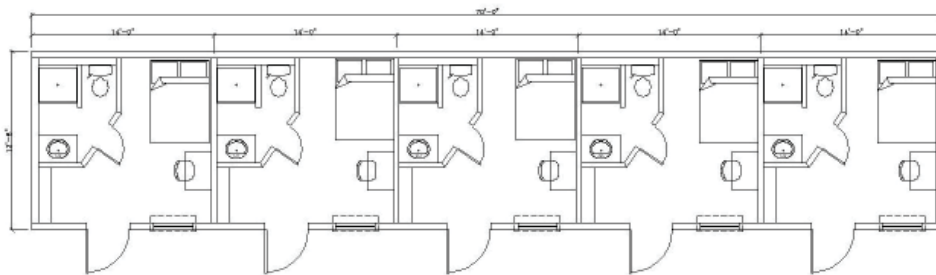
MATT KRAMER

PH. (281) 814-3337

E-MAIL: MCKRAMER@ENERSPACEMODULAR.COM

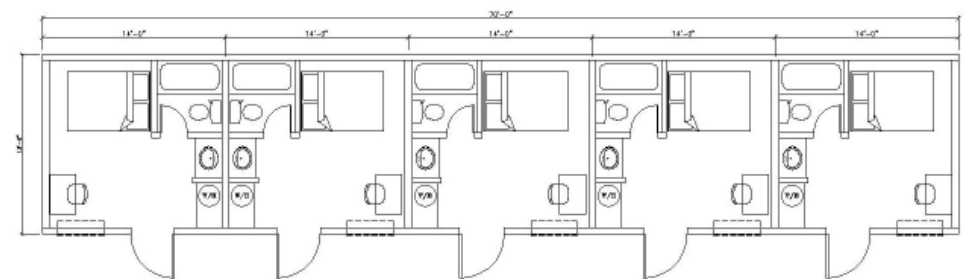


EXECUTIVE MOBILE HOUSING



STANDARD FEATURES

- SMART PANEL EXTERIOR
- LARGE 36" SHOWERS OR TUB/SHOWER - COMBINATION INCLUDED IN EACH ROOM
- FULLY FURNISHED
- SUSPENDED GRID CEILING
- FULL HEIGHT PARTITION WALLS HAVE SOUND PROOF INSULATION
- FULL SIZED BEDS



OPTIONAL FEATURES

- PERIMETER FRAMES OR OILFIELD FRAME
- CARPET IN SLEEPING QUARTERS
- .019 ALUMINUM EXTERIOR SIDING
- EPDM RUBBER ROOF AVAILABLE IN BLACK OR WHITE
- INTERNET/CABLE TV

ENERSPACE

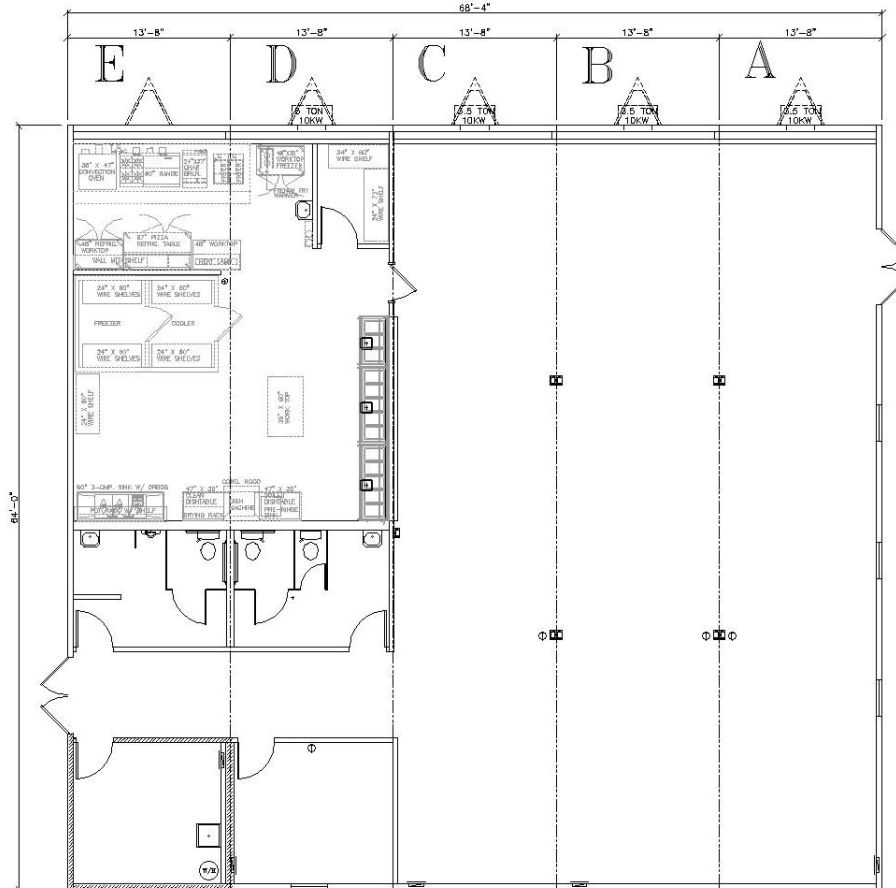
MODULAR GROUP

CONTACT

MATT KRAMER

PH. (281) 814-3337

E-MAIL: MCKRAMER@ENERSPACEMODULAR.COM



70 x 68 DINING HALL

STANDARD FEATURES

- STANDARD OUTRIGGER FRAME
- HI-RIB EXTERIOR
- SUSPENDED GRID CEILING
- INDUSTRIAL GRADE FULL SERVICE KITCHEN WITH STAINLESS STEEL COUNTERTOPS IN COOKING AREA
- HEATING/AIR CONDITIONING THROUGHOUT

OPTIONAL FEATURES

- PERIMETER FRAMES OR OILFIELD FRAME
- .019 ALUMINUM EXTERIOR SIDING
- EPDM RUBBER ROOF AVAILABLE IN BLACK OR WHITE
- HEAVY DUTY .080 HEAT STEAMED VINYL

ENERSPACE

MODULAR GROUP

CONTACT

MATT KRAMER

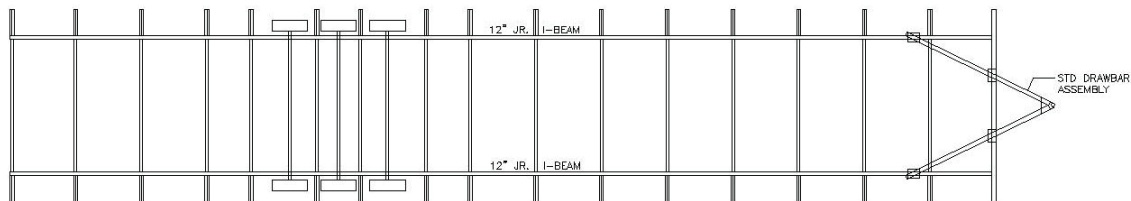
PH. (281) 814-3337

E-MAIL: MCKRAMER@ENERSPACEMODULAR.COM

OUTRIGGER AND OIL FIELD FRAMES

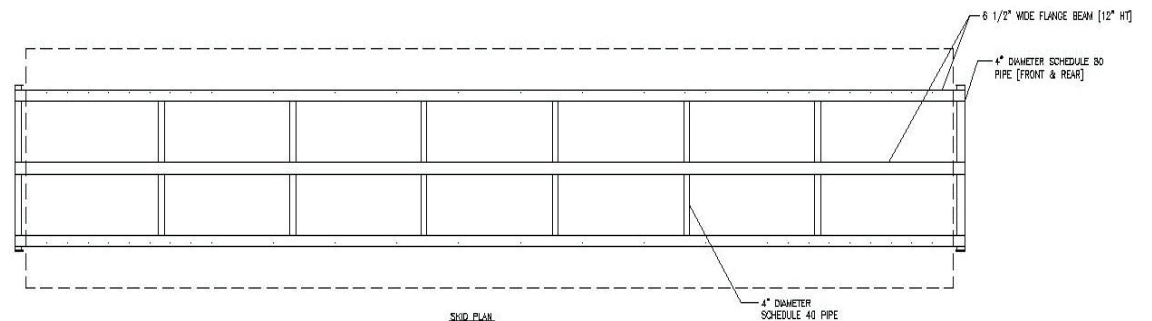
STANDARD FEATURES

- STANDARD OUTRIGGER FRAME BUILT WITH 12 ½" I-BEAM WITH CROSSMEMBERS AT 48" O.C.
- OPTIONAL TEXAS PERIMETER FRAME BUILT WITH 12 ½" I-BEAM AND SISTER BEAM
- OPTIONAL C-CHANNEL PERIMETER FRAME BUILT WITH 12" C-CHANNEL WITH 'Z' MEMBERS AT 16" CENTERS
- ALL HITCHES ARE DETACHABLE



STANDARD OUTRIGGER FRAME

OPTIONAL SKID FRAME



ENERSPACE

MODULAR GROUP

CONTACT

MATT KRAMER

PH. (281) 814-3337

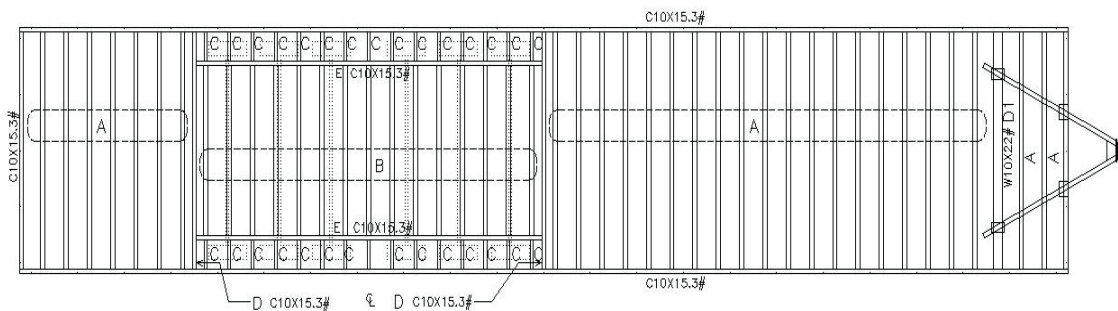
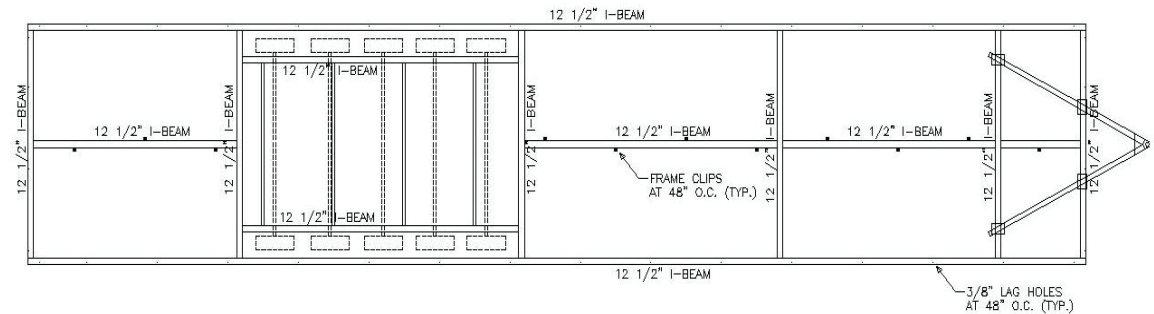
E-MAIL: MCKRAMER@ENERSPACEMODULAR.COM

OUTRIGGER AND OIL FIELD FRAMES

STANDARD FEATURES

- STANDARD OUTRIGGER FRAME BUILT WITH 12 1/2" I-BEAM WITH CROSS MEMBERS AT 48" O.C.
- OPTIONAL TEXAS PERIMETER FRAME BUILT WITH 12 1/2" I-BEAM AND SISTER BEAM
- OPTIONAL C-CHANNEL PERIMETER FRAME BUILT WITH 12" C-CHANNEL WITH 'Z' MEMBERS AT 16" CENTERS
- ALL HITCHES ARE DETACHABLE

OPTIONAL TEXAS PERIMETER FRAME



OPTIONAL C-CHANNEL FRAME

ENERSPACE

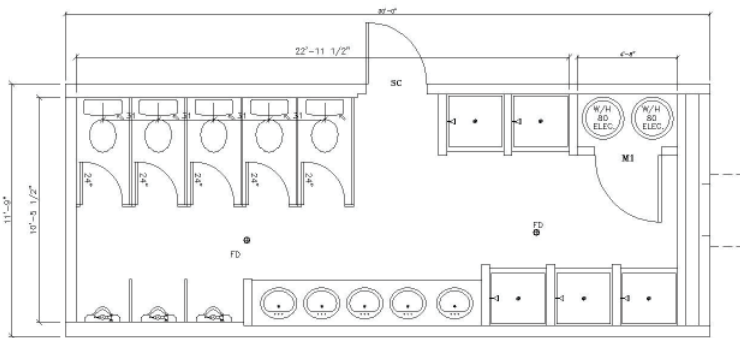
MODULAR GROUP

CONTACT

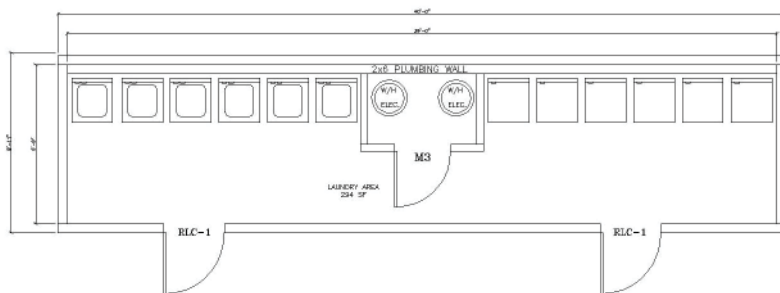
MATT KRAMER

PH. (281) 814-3337

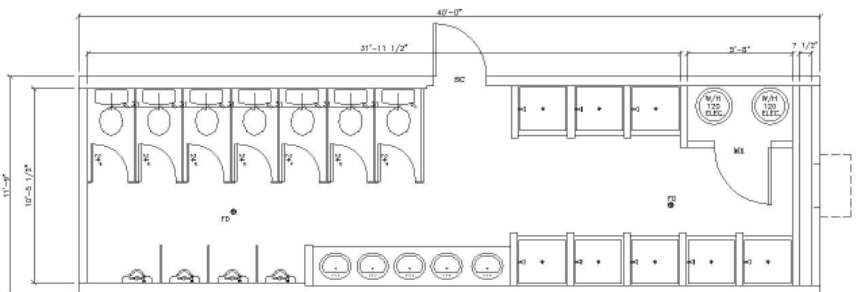
E-MAIL: MCKRAMER@ENERSPACEMODULAR.COM



30 FOOT TOILET TRAILER



40 FOOT LAUNDRY TRAILER



40 FOOT TOILET TRAILER

TOILET AND LAUNDRY TRAILERS

STANDARD FEATURES

- HI-RIB EXTERIOR
- WASHERS AND DRYERS INCLUDED WITH LAUNDRY UNITS
- LARGE 36" SHOWERS IN RESTROOM TRAILERS

OPTIONAL FEATURES

- HEAVY DUTY .080 SEAMED SHEET VINYL
- PERIMETER FRAMES OR OILFIELD FRAMES
- .019 ALUMINUM SIDING
- EPDM RUBBER ROOF AVAILABLE IN BLACK OR WHITE

ENERSPACE

MODULAR GROUP

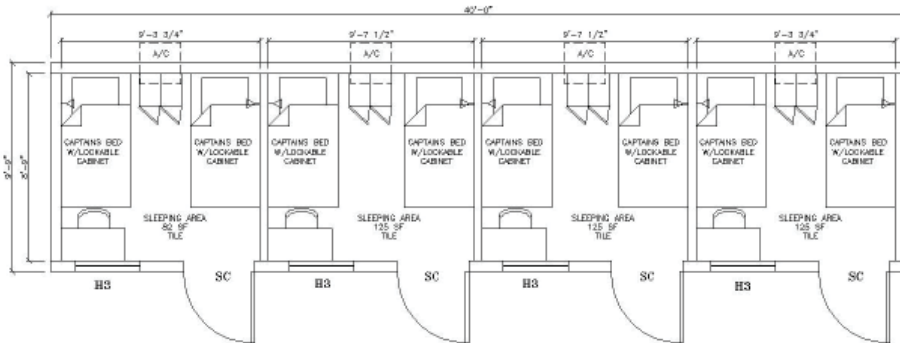
CONTACT

MATT KRAMER

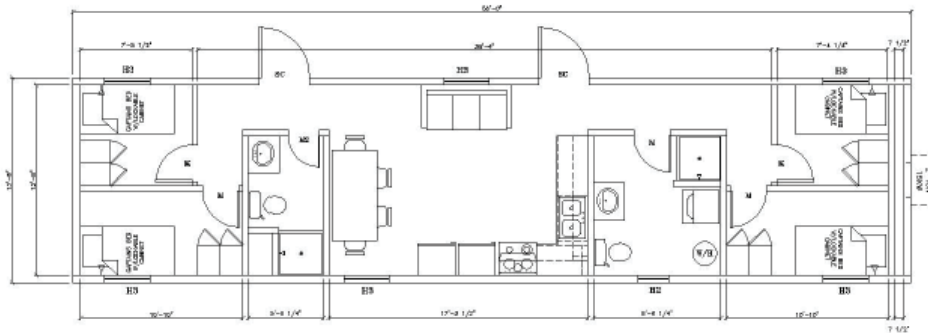
PH. (281) 814-3337

E-MAIL: MCKRAMER@ENERSPACEMODULAR.COM

SLEEPING QUARTERS



4 UNIT SLEEPER



4 UNIT SLEEPER WITH LIVING SPACE

STANDARD FEATURES

- HI-RIB EXTERIOR
- FULLY FURNISHED
- INDIVIDUAL HEATING/COOLING FOR EACH ROOM
- CAPTAINS BEDS INCLUDE UNDER BED LOCKABLE STORAGE
- FULL HEIGHT PARTITION WALLS HAVE SOUND PROOF INSULATION
- SUSPENDED GRID CEILING
- STANDARD OUTRIGGER FRAME

OPTIONAL FEATURES

- PERIMETER FRAMES OR OILFIELD FRAME
- CARPET IN SLEEPING QUARTERS
- .019 ALUMINUM EXTERIOR SIDING
- EPDM RUBBER ROOF AVAILABLE IN BLACK OR WHITE
- INTERNET/CABLE TV

ENERSPACE

MODULAR GROUP

CONTACT

MATT KRAMER

PH. (281) 814-3337

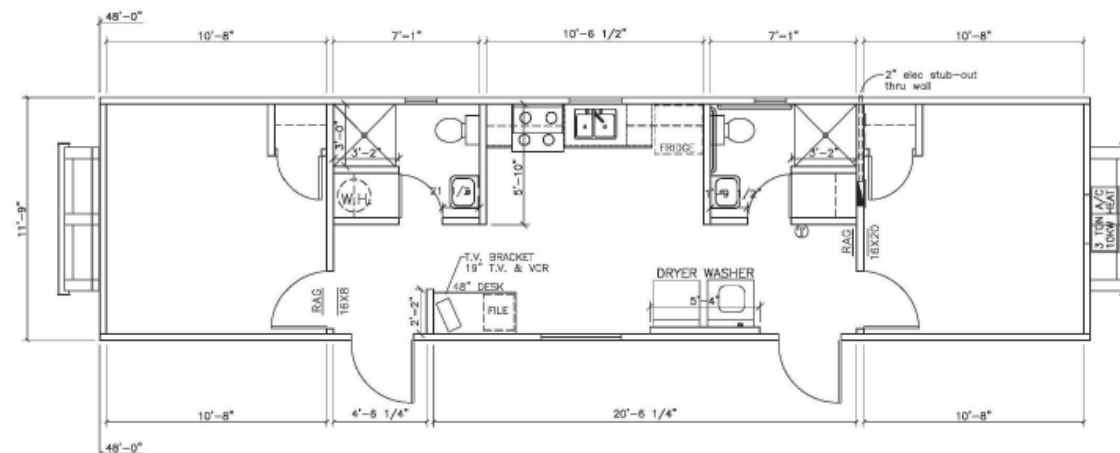
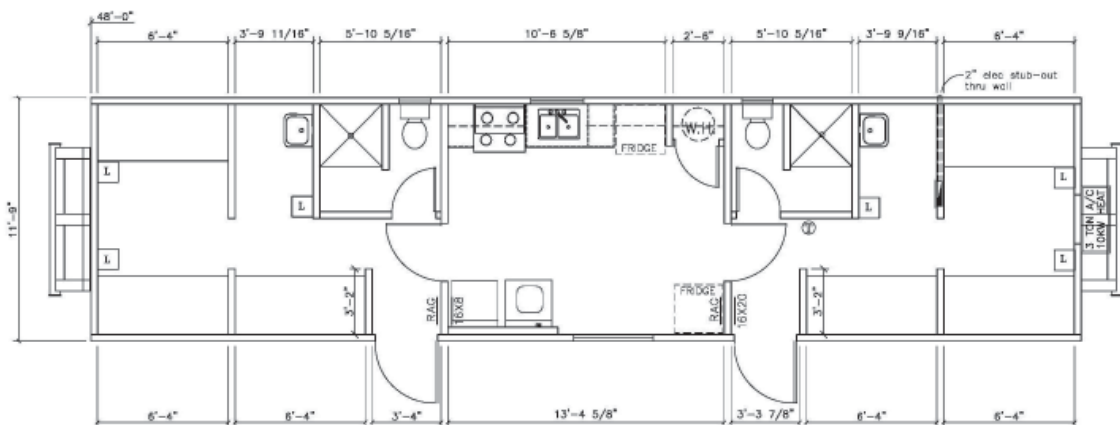
E-MAIL: MCKRAMER@ENERSPACEMODULAR.COM

OILFIELD LIVING QUARTERS

STANDARD FEATURES

- .019 ALUMINUM EXTERIOR SIDING
- OILFIELD STEEL SKID FRAME
- FULLY FURNISHED

6 MAN BUNKHOUSE



TOOLPUSHER

ENERSPACE

MODULAR GROUP

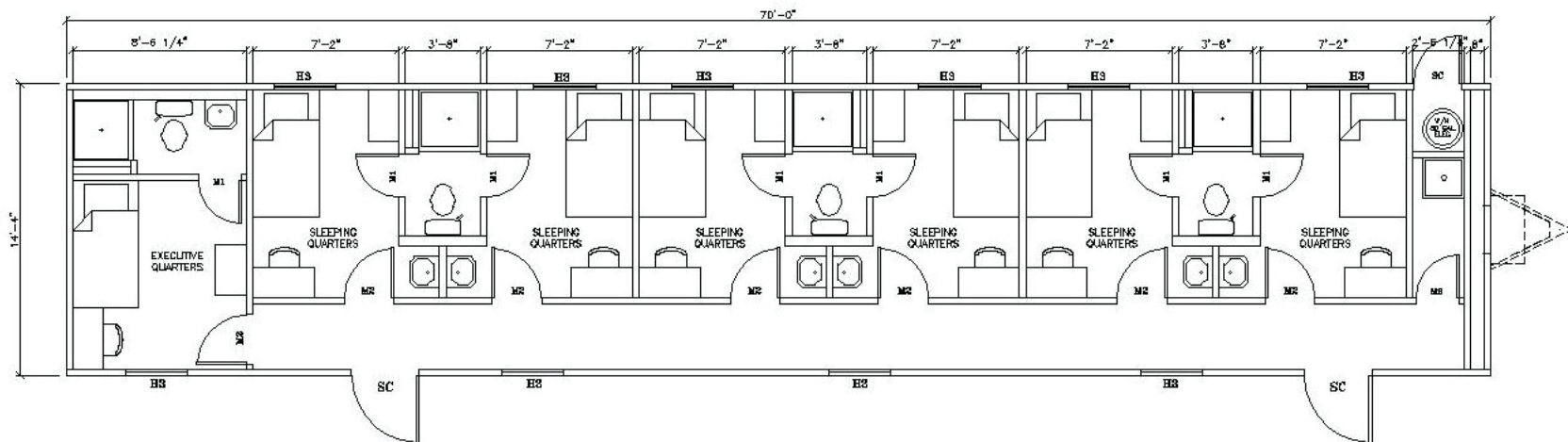
CONTACT

MATT KRAMER

PH. (281) 814-3337

E-MAIL: MCKRAMER@ENERSPACEMODULAR.COM

6-MAN WITH EXECUTIVE QUARTERS



STANDARD FEATURES

- .019 ALUMINUM EXTERIOR SIDING
- PERIMETER FRAME OILFIELD STEEL SKID FRAME
- NON CODED
- EPDM ROOF RUBBER ROOF AVAILABLE IN BLACK OR WHITE

OPTIONAL FEATURES

- STATE CODED
- 26 GA R-PANEL GALVALUME ROOF
- VINYL COATED GYPSUM
- SUSPENDED GRID CEILING
- FIBERGLASS REINFORCED PANEL IN RESTROOMS
- REAR WINDOWS W/MINIBLINDS
- HOLLOW CORE DOORS W/TIMLEY FRAMES
- BLACK & GRAY WATER SEPARATION
- CROSS-LINKED POLYETHYLENE (PEX) SUPPLY LINES
- FULLY FURNISHED